

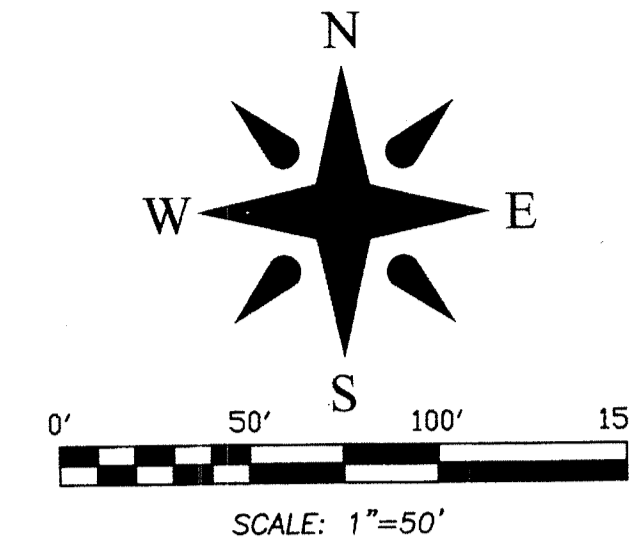
193

ABBREVIATIONS AND SYMBOLS

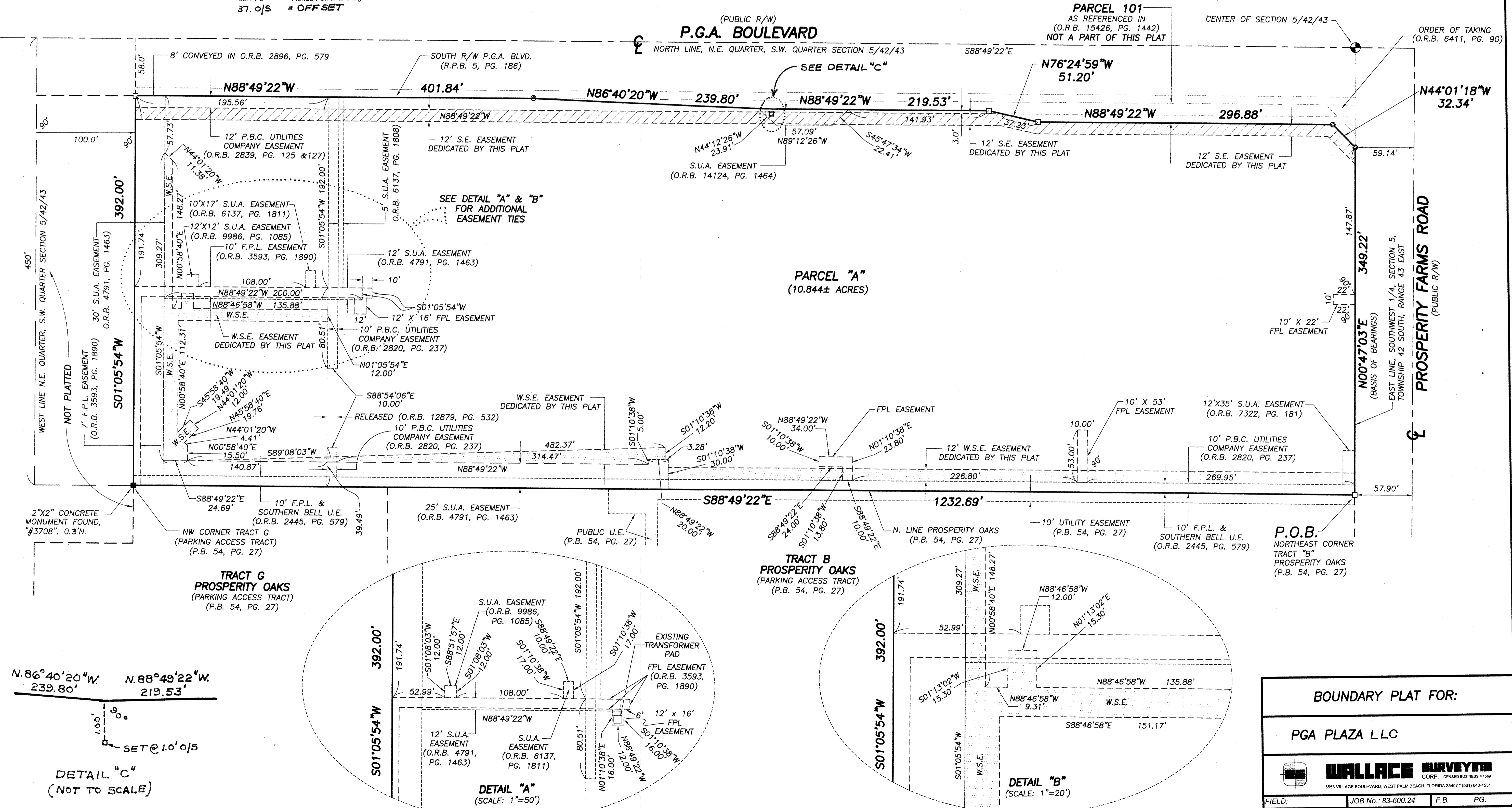
- 1. =Denotes Set Permanent Reference Monuments (P.R.M.'s) with disk Stamped "P.R.M. WALLACE LB#4569"
- 2. =Denotes Found Concrete Monument (as noted)
- 3. =Denotes Set Mag Nail with Disk Stamped "P.R.M. WALLACE LB#4569"
- 4. =Centerline
- 5. =Right of Way
- 6. =Plat Book
- 7. =Pages
- 8. =Section
- 9. =Township
- 10. =Range
- 11. =Utility Easement
- 12. =Drainage Easement
- 13. =Deed Book
- 14. =Arc Length
- 15. =Central Angle
- 16. =Radius
- 17. =Chord Bearing
- 18. =Official Records Book
- 19. =Road Plat Book
- 20. =Lake Maintenance Easement
- 21. =Seacoast Utility Authority
- 22. =Point of Commencement
- 23. =Point of Beginning
- 24. =Palm Beach County
- 25. =Found
- 26. =Easement
- 27. =Westerly
- 28. =Northing
- 29. =Easting
- 30. =Survey
- 31. =Deed
- 32. =Calculated
- 33. =Palm Beach County Public Records
- 34. =Sewer Easement
- 35. =Water and Sewer Easement
- 36. =Florida Power and Light
- 37. = OFF SET

PGA PLAZA

LYING IN SECTION 5, TOWNSHIP 42 SOUTH, RANGE 43 EAST
CITY OF PALM BEACH GARDENS, PALM BEACH COUNTY, FLORIDA



SHEET 2 OF 2



BOUNDARY PLAT FOR:			
PGA PLAZA LLC			
WALLACE SURVEYING CORP. LICENSED BUSINESS # 4569 5553 VILLAGE BOULEVARD, WEST PALM BEACH, FLORIDA 33407 * (561) 640-4551			
FIELD:	JOB No.: 83-600.24	F.B.	PG.
OFFICE: R.C.	DATE: SEPT. 17, 2013	DWG. No.:	83-600-2
C'D:	REF.: 83-600-2.DWG	SHEET 2 OF 2	